

# MODEL:Φ7mm Coreless DC Motor

输出功率: 约0.05~1.2W  
贵金属电刷空心杯直流马达

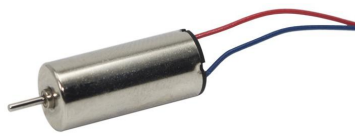
OUTPUT: APPROX 0.05~1.2W  
Precious Metal-brush Coreless DC Motor

**典型应用:**

遥控模型  
电动玩具  
电子产品

**Typical Applications:**

RC Models  
Electronic toys  
Mini electronic products

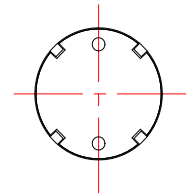
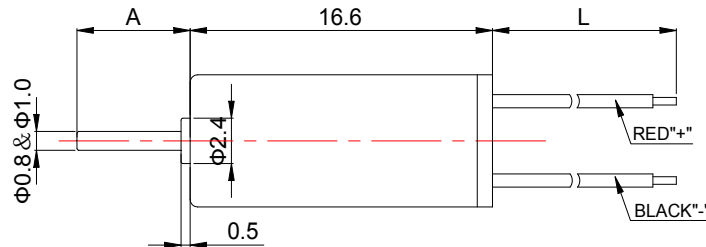
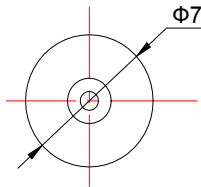


## 1. OUTLINE DRAWING:

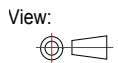
UNIT:MM

716-Q

DIRECTION OF ROTATION  
CW

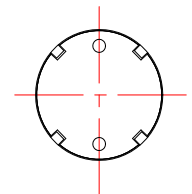
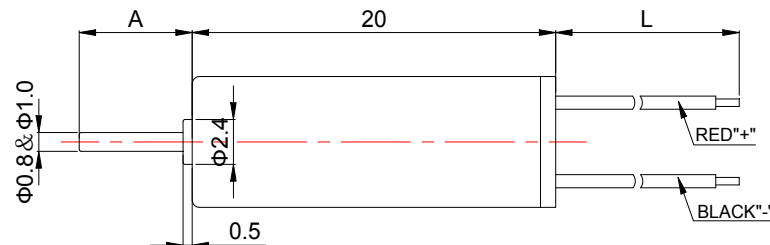
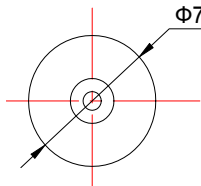


WEIGHT: 2.5g (Approx)

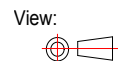


720-Q

DIRECTION OF ROTATION  
CW



WEIGHT: 3.0g (Approx)



**Customizable Parameters:**

1. Length A and L
2. Electric Performance
3. Direction of Rotation
4. Eccentric Wheel is available

## 2. MOTOR PERFORMANCE :

MODEL	VOLTAGE		NO LOAD		AT MAXIMUM EFFICIENCY					STALL		
	OPERATING RANGE	NOMINAL V	SPEED rpm	CURRENT A	SPEED rpm	CURRENT A	TORQUE g.cm	TORQUE mN.m	OUTPUT W	TORQUE g.cm	TORQUE mN.m	CURRENT A
0716-Q-1	1.0~2.0	1.2	22200	0.033	16700	0.11	0.3	0.03	0.05	1.20	0.12	0.34
0716-Q-2	2.0~4.0	3.0	33000	0.04	25145	0.128	0.69	0.07	0.18	2.90	0.28	0.41
0716-Q-3	2.0~4.0	3.7	47500	0.095	39450	0.47	2.72	0.27	1.10	15.80	1.55	2.4
0720-Q-1	1.2~2.0	1.5	28000	0.05	22100	0.2	0.62	0.06	0.14	3.10	0.30	0.78
0720-Q-2	1.5~3.5	3.0	37000	0.032	30100	0.14	0.75	0.07	0.23	4.05	0.40	0.61
0720-Q-3	2.0~4.0	3.7	42500	0.075	35800	0.39	2.48	0.24	0.91	15.80	1.55	2.12