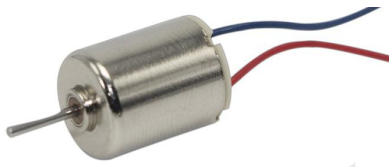


MODEL:Φ10mm Coreless DC Motor

输出功率: 约0.1~3.0W
贵金属电刷空心杯直流马达

OUTPUT: APPROX 0.1~3.0W
Precious Metal-brush Coreless DC Motor



典型应用:

遥控模型
电动玩具
电子产品

Typical Applications:

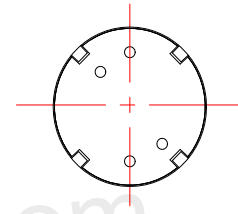
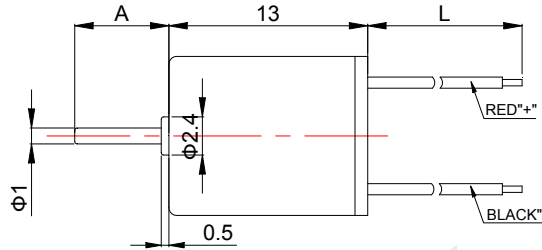
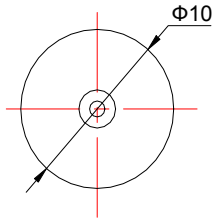
RC Models
Electronic toys
Mini electronic products

1. OUTLINE DRAWING:

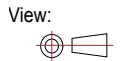
UNIT:MM

1013-Q

DIRECTION OF ROTATION

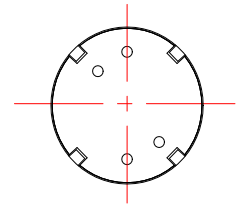
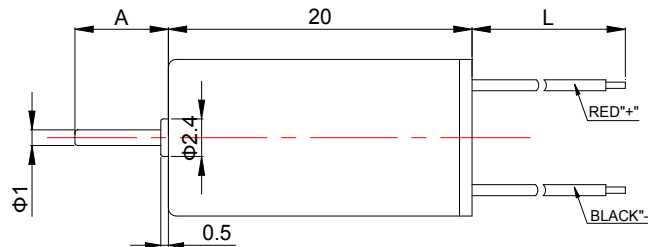
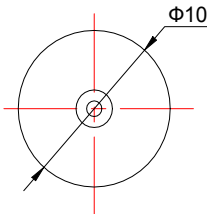
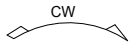


WEIGHT: 4.4g (Approx)

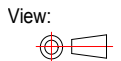


1020-Q

DIRECTION OF ROTATION



WEIGHT: 7.45g (Approx)



Customizable Parameters:

1. Length A and L
2. Electric Performance
3. Direction of Rotation
4. Eccentric Wheel is available

2. MOTOR PERFORMANCE :

MODEL	VOLTAGE		NO LOAD		AT MAXIMUM EFFICIENCY					STALL		
	OPERATING RANGE	NOMINAL V	SPEED rpm	CURRENT A	SPEED rpm	CURRENT A	TORQUE g.cm	TORQUE mN.m	OUTPUT W	TORQUE g.cm	TORQUE mN.m	CURRENT A
1013-Q-1	2.0~4.0	3.0	30000	0.06	25400	0.33	1.9	0.19	0.49	12.50	1.23	1.82
1013-Q-2	3.0~7.0	6.0	26500	0.035	20000	0.11	1.4	0.14	0.29	5.80	0.57	0.34
1013-Q-3	2.0~4.0	3.0	15000	0.032	11500	0.11	1.2	0.12	0.14	5.20	0.51	0.35
1020-Q-1	1.5~4.0	3.0	14500	0.09	11590	0.36	4.9	0.48	0.58	24.50	2.40	1.43
1020-Q-2	3.0~14.0	12.0	26500	0.11	20240	0.356	10.6	1.04	2.20	45.00	4.42	1.15